



**A global network of impact networks
to accelerate collaborative change**

WE BELIEVE

that when impact networks
addressing similar
challenges come together
to learn, share, and
collaborate – we can deliver

deeper and amplified impact

Why Networks?

The challenges the world faces today – from climate change to highly unequal economic and social structures – cannot be solved by one organisation, government or institution alone. We must collaborate to share learnings, scale innovations and build our collective capacity to bring about social impact.

There is a rich and growing body of both lived experience and research demonstrating that **collaboration through networks can cultivate learning and awareness, offer encouragement and support, pool resources and widen access to opportunity.**

We thus see impact networks as critical to individual and systemic change, whether in education, youth development, gender equality or philanthropy.



**Public Sector
Leadership Networks**

**Education-focused
Networks**

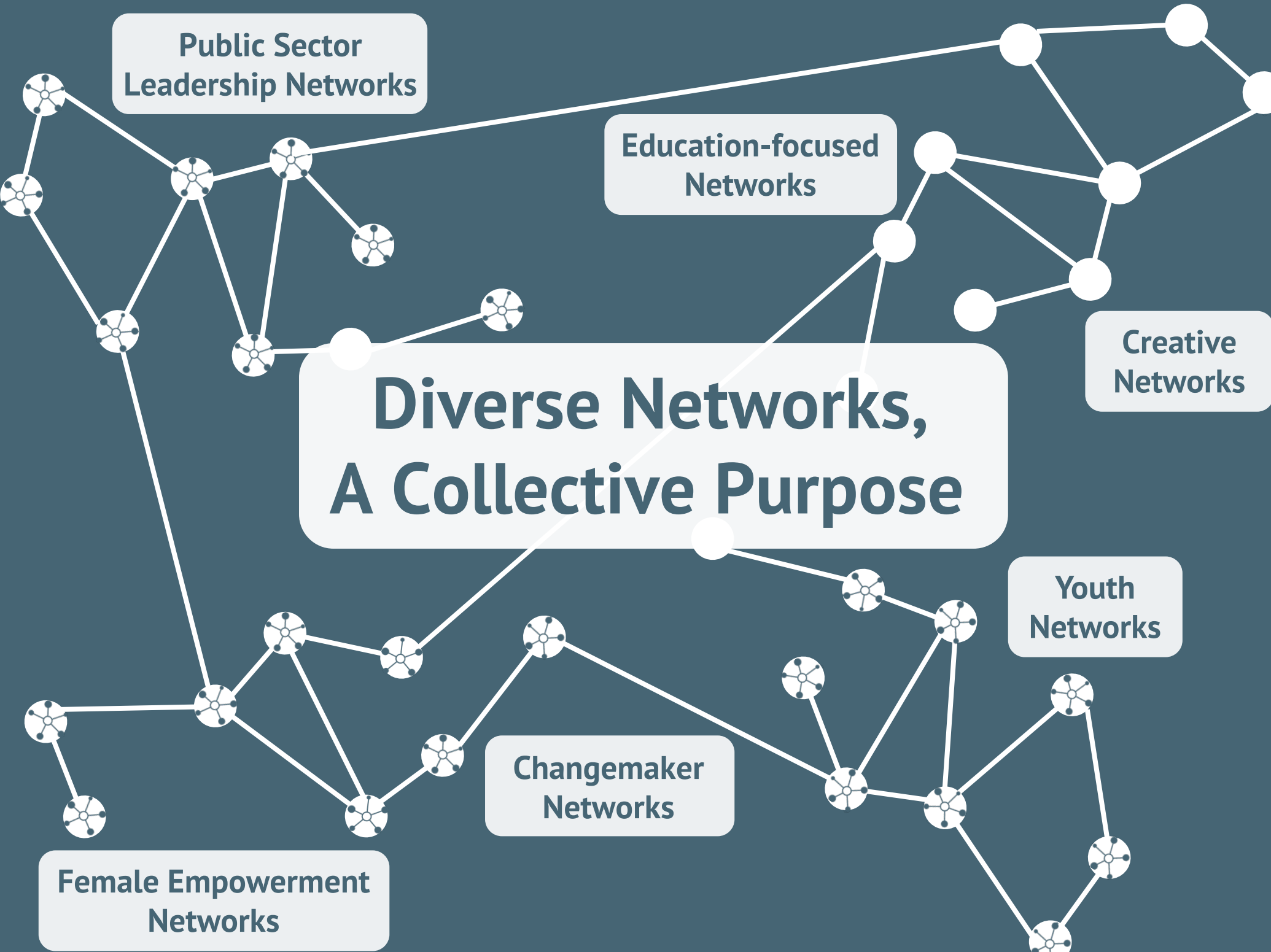
**Creative
Networks**

**Diverse Networks,
A Collective Purpose**

**Youth
Networks**

**Changemaker
Networks**

**Female Empowerment
Networks**



Nexus was founded in 2021 to:

- ▶ **Strengthen networks' capacities** to increase impact in serving their mission
- ▶ **Expand access to knowledge,** support, and motivation by connecting network leaders
- ▶ **Increase financial support for networks** by advocating how network drive social change
- ▶ **Spark collaborative impact** for broad-scale change across diverse impact networks

75 members, reaching 900,000 individuals across the globe

...and that's only in the first year

Teach For All
A Global Network



African Leadership Academy
Developing the next generation of African leaders



Future First

MitOst

FRONTLINE
CHANGING LIVES



GLOBAL SCHOOL LEADERS

NOWTEACH



Columba Leadership



Canon Collins
Educational & Legal Assistance Trust

Unlocked



BUILDING TOMORROW



CAMFED
CAMPUS FOR FEMALE EDUCATION



Global Citizen Year



Tawai Takapiri CONNECT FUTURES NZ TRUST



CHANGEMAKERXCHANGE



FAWE Forum for African Women Educationalists
Forum des éducatrices africaines



mastercard foundation



Bosch Alumni Network

POLICE:NOW
INFLUENCE FOR GENERATIONS



EducAid
Learning for life in Sierra Leone



EMpower



CLINTON FOUNDATION

Unlocking Networks to Accelerate Change

100's of conversations across the globe has revealed a common set of barriers standing in the way of achieving deep social impact through networks

Capacities & Mindsets

Principles and approaches to coordinate and "weave" networks are hard to come by

Accessing Resources

Openly accessible structures and techniques for nurturing networks are few and far between

Collaborating Across Sectors

Working across networks to address larger, systemic issues is complex and challenging

Demonstrating Impact

Capturing evidence of network impact requires methods not in our collective toolbox

Obtaining Funding

Most philanthropies aren't set up to cover the costs and structures of network coordination



What We Can Achieve When We Bring Impact Networks Together



Reduced Costs

to accessing crucial networks knowledge and expertise



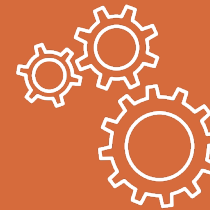
Greater Innovation

cross-pollinating people and places to spark new ideas and perspectives



Long-term Learning

continually honing skills and capacities for network leadership



Unlocking Sector Potential

reducing silos and duplication of effort by identifying patterns of success



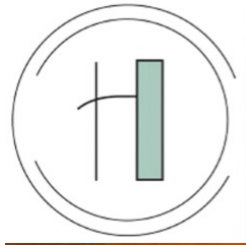
Systems Experiments

uniting diverse networks to pilot shared strategies for systems change



Ripple Effects

mobilizing millions of network members to spread systems policies and approaches – and cultivate new cultural paradigms



The International Peer Leadership Network – who brings together supporters in mental health and substance use – is struggling with how to **best capture and showcase their network impact**.



Y-East – a platform for aggregated social and environmental impact in Eastern India – is stuck on how to **financially sustain convening and coordination costs** for their network.



CHANGEMAKERXCHANGE

ChangemakerXchange – a global community of young social innovators – is asking how to **bring youth-led facilitation to other networks** in the space



Scholars Program

The Mastercard Foundation's Scholar Program – who is connecting alumni to advance entrepreneurship and jobs in Africa – is exploring how to best **build cohesion and sustain momentum** in a network.

Current Nexus Members: What They're Asking For

What Nexus Offers to Members



OPEN LEARNING

Learning events, curated journeys, materials and guides



OPPORTUNITY SHARING

Jobs, funding, workshops, and conferences on topics of interest



PEER SUPPORT

Coaching, 1-to-1 guidance, group troubleshooting



CO-CREATED TOOLKIT

Database on starting, running, and growing a network



COLLECTIVE ACTION

Cross-pollinating networks to design and run shared projects



SHARED ADVOCACY

Storytelling and campaigns on network models and impact



AGGREGATED IMPACT

Collating data across members to assess collective impact

monthly learning events



Go to www.menti.com and use the code 9649 2144

What is the BIGGEST challenge you face in your impact evaluation and learning work?

Press S to show image

1:17 / 57:44

63

Brendon Johnson



click to watch

Sample Topics

- Network impact
- Member engagement
- Storytelling
- Funding networks
- Facilitation
- Motivating members
- Network leadership
- Communicating to members

Airtable Collective Impact Resource Library Sign up

Hide fields Filter Group Sort

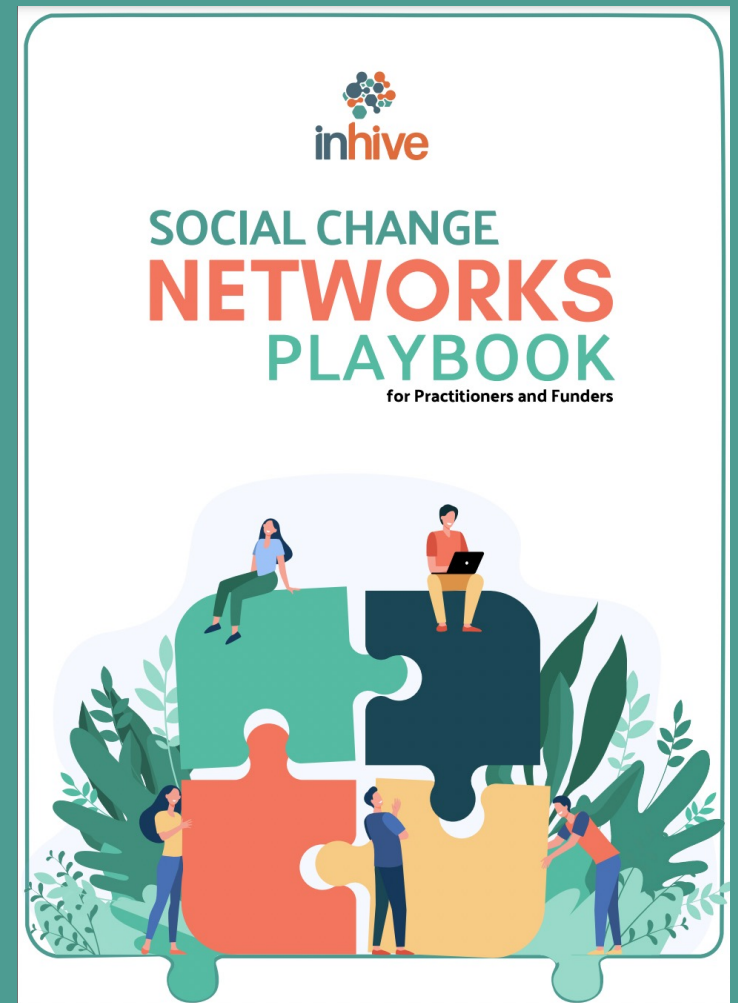
	Tool	Rating	Quick description	Purpose	Keywords
6	Rich Picture	★★★★★	Participants visually represent an issue or situation through a drawing	Help participants understand the complexity of an entire situation	Problem Analysis Solution Finding
7	World Cafe	★★★★★	Groups move along tables to contribute discussions to specific ...	Collaborative dialogue, sharing knowledge, and co-creation	Solution Finding Brainstorming
8	NetMapping	★★★★★	Visually map and discuss stakeholders' links by type and ...	Understand situations where many actors influence outcomes	Stakeholder Mapping Collaboration Goal
9	BrainSketching	★★★★★	Collectively draw solutions to problem person-to-person	To solve problems through a collaborative brainstorming process	Solution Finding Brainstorming
10	Role Plays	★★★★★	Act out a situation by creating a made-up scene	Better understand a situation or perspectives in-depth	Problem Analysis Solution Finding
11	Ritual Dissent	★★★★★	Present negative and constructive feedback without tensions	Test and enhance proposals or ideas by challenging them	Collaboration Program Design
12	Open Space	★★★★★	Discuss many agenda points at once across multiple groups	Deal with urgent complex issues with a diverse group of stakeholders	Brainstorming Program Design
13	Visioning	★★★★★	Brainstorm, group, and link ideas into one or a collective vision	Generate a common goal, hope, creative thinking, and passion	Visioning Futuring Collaboration
14	Fish Bowl	★★★★★	Small group sits in the middle of larger group for intimate dialogue	Facilitate discussions and sharing expertise on controversial issues	Planning Solution Finding
15	Free Writing	★★★★★	Continue writing without stopping for	Frees up the conscious to think about	Introverts
451 records		Sum 1692			

network-focused resources



click to access

*curated
networks tools*



click to read



How investing in social impact networks can spur innovation and change



click to read

collaborative knowledge sharing



member & network opportunities



Airtable Nexus Opportunities Database [Use this data](#)

Filter Sort

<p>2022 Annual Conference, by The Ins...</p> <p>SUMMARY</p> <p>This year's conference will focus on making connections, how we strengthen our relationships across the school community, and maximise on the potential of these ...</p> <p>TYPE</p> <p>Conference</p> <p>STARTING DATE</p> <p>23 June 2022</p> <p>URL</p> <p>https://idpe.org.uk/?code=&action=printsnip...</p>	<p>Networks 101, by Collective+Mind</p> <p>SUMMARY</p> <p>Want to learn about what a network is or what networks need to be effective and impactful? Need a framework to assess and improve your network? Join one of our interactive Network...</p> <p>TYPE</p> <p>Course</p> <p>STARTING DATE</p> <p>30 March 2022</p> <p>URL</p> <p>https://www.collectivemindglobal.org/learn/#!...</p>
<p>Hive: creative minds, participatory r...</p> <p>SUMMARY</p> <p>Hive, our two-day online event, will be packed with presentations, roundtables and keynote sessions designed for and by people engaged with peer research. Conference streams will ...</p> <p>TYPE</p> <p>Conference</p> <p>STARTING DATE</p> <p>23 March 2022</p> <p>URL</p> <p>https://www.youngfoundation.org/event/hive-...</p>	<p>Social Enterprise Complexity & Syst...</p> <p>SUMMARY</p> <p>The Social Enterprise Complexity & Systems Change Day is an opportunity for the social enterprise sector to come together to hear about some of the systems-led work that is ...</p> <p>TYPE</p> <p>Conference</p> <p>STARTING DATE</p> <p>14 March 2022</p> <p>URL</p> <p>https://events.humanitix.com/social-enterpri...</p>
<p>Network Management 101, by Collec...</p> <p>SUMMARY</p> <p>Do you work with or for a network? At Collective Mind, we know firsthand the struggles of being a network practitioner.</p>	<p>Network Engagement Officer, by Ne...</p> <p>SUMMARY</p> <p>NEID Global is looking for a creative, personable and internationally minded staff member to join our growing team! The</p>

click to access



Join for Free!

Contact beverly@inhiveglobal.org